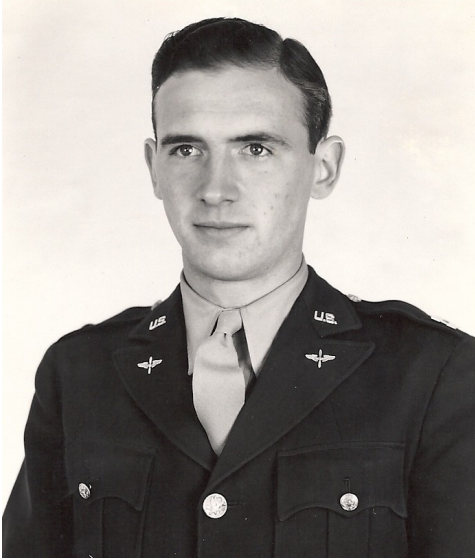


# JENSEN, Douglas P.

B: 9 December 1920 NJ



**Hometown:** Sanborn, New York

**Rank:** Captain

**MOS:** 2120 - Squadron Executive Officer

**Unit:** 335th Fighter Squadron  
336th Fighter Squadron  
334th Fighter Squadron  
24th Station Complement Squadron  
438th Headquarters and Base Services Squadron

**4th Service:** 9 December 1942 – May 1945

10 DEC 42 Designated Squadron Statistical Officer  
1 MAR 43 Designated Squadron War Bonds Officer (AD)  
APR 43 Promoted to 1st Lieutenant  
7 MAY 43 Designated Squadron Adjutant (PD)  
29 DEC 43 Assigned to 336th Fighter Squadron:  
designated Squadron Executive Officer (PD)  
1 FEB 44 Promoted to Captain  
25 SEP 44 Assigned to 334th Fighter Squadron;  
designated Squadron Executive Officer (PD)  
1 APR 45 Transferred to the 24th Station Complement  
Squadron  
15 APR 45 Transferred to the 438th Headquarters and  
Base Services Squadron

**Post 4th Fighter Group:**

N/A

**Decorations:**

Presidential Unit Citation, World War II Victory  
Medal.